

CLPX Recombinant antibody

Cat: B36077S

Company: HaoKeBio

Uniprot ID: O76031

Applications: IHC: 1:50-1:500

Organism: Rabbit

IHC-Polymer: 1:200-1:2000

Species reactivity: Human Mouse Rat

IHC-TSA: 1:250-1:2500

Molecular Weight Calculation: 69 kDa

WB: 1:2000-1:10000

Observed Molecular Weight: 63 kDa

FC: 1:200-1:600

Background:

The protein encoded by this gene is part of a protease found in mitochondria. This protease is ATP-dependent and targets specific proteins for degradation. The protease consists of two heptameric rings of the CLPP catalytic subunit sandwiched between two hexameric rings of the chaperone subunit encoded by this gene. Targeted proteins are unwound by this protein and then passed on to the CLPP subunit for degradation. Two transcript variants, one protein-coding and the other non-protein coding, have been found for this gene.

Synonyms:

230346H1, EPP2

Immunogen:

Recombinant protein

Isotype:

IgG

Subcellular location:

Cytoplasm

Purity:

Affinity purification

Form:

Liquid

Storage Buffer:

PBS with 0.02% sodium azide, 100 µg/ml BSA and 50% glycerol.

Storage:

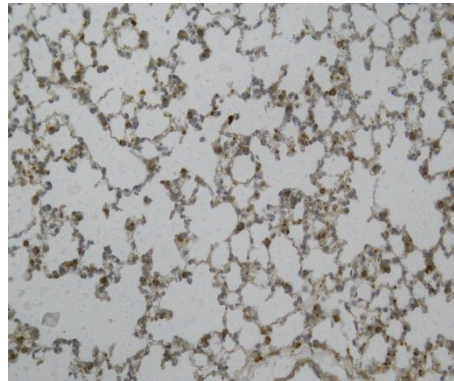
Store at -20 °C for one year.

Experimental procedure:

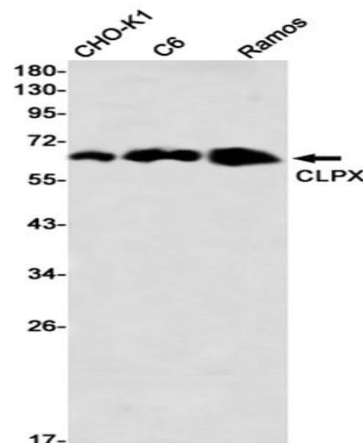
Antigen retrieval: Citrate buffer (pH 9.0), Medium high heat for 8 minutes, stop for 7 minutes, medium

high heat for 8 minutes. Incubate antibody, 4°C overnight. Secondary antibody: Poly-HRP Goat Anti-Rabbit & Mouse Universal Secondary Antibody, RT, 1h.

Images:



Sample: Mouse lungs, 4% PFA 12-24h



Dilution of 1:10000 incubated at room temperature for 1.5 hours.

Source of Reagents:

发表[中文论文]请标注:CLPX(B36077S)由杭州浩克生物技术有限公司提供;

发表[英文论文]请标注:CLPX(B36077S) were kindly provided by Hangzhou Haoke Biotechnology Co., Ltd.

