

ALDH1B1 Recombinant antibody

Cat: B36426S

Company: HaoKebio

Uniprot ID: P30837

Applications: IHC:1:500-1:2000

Organism: Rabbit

IHC-Polymer:1:2000-1:8000

Species reactivity: Human Mouse Rat

IHC-TSA:1:2500-1:10000

Molecular Weight Calculation: 57 kDa

IF:1:50-1:100

Observed Molecular Weight: 50-55 kDa

WB:1:5000-1:50000

Background:

Aldehyde dehydrogenases (ALDHs) belong to a superfamily of NAD(P)⁺-dependent enzymes, which catalyze the oxidation of endogenous and exogenous aldehydes to their corresponding acids. ALDH1B1 is a mitochondrial ALDH that it is dramatically upregulated in human colonic adenocarcinoma, making it a potential biomarker for human colon cancer. ALDH1B1 is a homotetramer expressed in various adult and fetal human tissues including liver, testis, kidney, skeletal muscle, heart, placenta, brain and lung.

Synonyms:

Aldehyde dehydrogenase 5, Aldehyde dehydrogenase X, mitochondrial, ALDH5, ALDHX, EC:1.2.1.3

Immunogen:

Recombinant protein

Isotype:

IgG

Subcellular location:

Cytoplasm

Purity:

Affinity purification

Form:

Liquid

Storage Buffer:

PBS with 0.02% sodium azide, 100 µg/ml BSA and 50% glycerol.

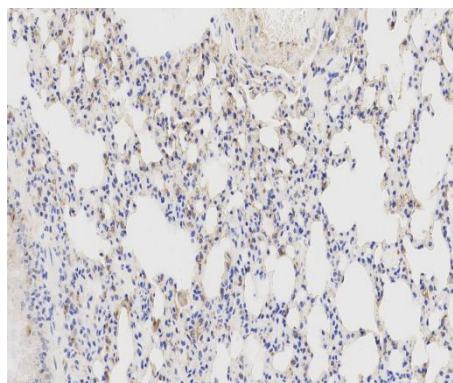
Storage:

Store at -20 °C for one year.

Experimental procedure:

Antigen retrieval: Citrate buffer (pH 9.0) , Medium high heat for 8 minutes, stop for 7 minutes, medium high heat for 8 minutes. Incubate antibody, 4°C overnight. Secondary antibody: Poly-HRP Goat Anti-Rabbit & Mouse Universal Secondary Antibody, RT, 1h.

Images:



Sample: Mouse lung, 4% PFA 12-24h

Source of Reagents:

发表[中文论文]请标注:ALDH1B1(B36426S)由杭州浩克生物技术有限公司提供;

发表[英文论文]请标注:ALDH1B1(B36426S) were kindly provided by Hangzhou Haoke Biotechnology Co., Ltd.