

CD21 Recombinant antibody

Cat: B36481S

Company: HaoKebio

Uniprot ID: P19070

Applications: IHC:1:500-1:2000

Organism: Rabbit

IHC-Polymer:1:2000-1:8000

Species reactivity: Mouse Rat

IHC-TSA:1:2500-1:10000

Molecular Weight Calculation: 113 kDa

IF:1:50-1:100

Observed Molecular Weight: 160-210 kDa

WB:1:5000-1:50000

Background:

CD21, also known as complement receptor type 2 (CR2), complement C3d receptor, and Epstein-Barr virus receptor, is a transmembrane protein that contains a small cytoplasmic domain, a transmembrane region and an extracellular domain consisting of 15 short consensus repeats (SCRs). CD21 binds complement fragments C3d, C3dg and iC3b and acts as a receptor for the Epstein-Barr virus. CD35, also known as complement receptor type 1 (CR1) or C3b/C4b receptor, binds C3b and C4b. The murine Cr2 gene encodes for both CD21 and CD35. Mouse CD35 comprises 21 SCRs while mouse CD21 is identical to mouse CD35 except that it lacks the first 6 SCRs. CD21/CD35 forms trimolecular complexes with CD19 and CD81 and plays roles in the regulation of humoral immune responses.

Synonyms:

CD21, Cr2, 241957E6

Immunogen:

Recombinant protein

Isotype:

IgG

Subcellular location:

Membrane

Purity:

Affinity purification

Form:

Liquid

Storage Buffer:

PBS with 0.02% sodium azide, 100 µg/ml BSA and 50% glycerol.

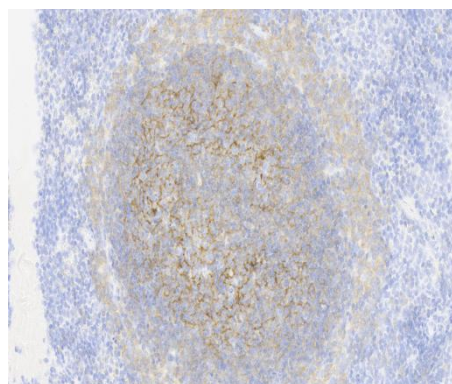
Storage:

Store at -20 °C for one year.

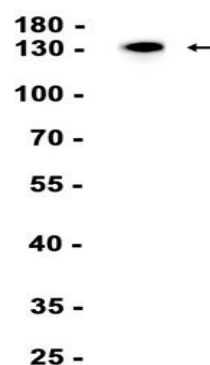
Experimental procedure:

Antigen retrieval: Citrate buffer (pH 9.0), Medium high heat for 8 minutes, stop for 7 minutes, medium high heat for 8 minutes. Incubate antibody, 4°C overnight. Secondary antibody: Poly-HRP Goat Anti-Rabbit & Mouse Universal Secondary Antibody, RT, 1h.

Images:



Sample: Mouse spleen, 4% PFA 12-24h

kDa


Dilution of 1:20000 incubated at room temperature for 1.5 hours.

Source of Reagents:

发表[中文论文]请标注:CD21(B36481S)由杭州
浩克生物技术有限公司提供;

发表[英文论文]请标注:CD21(B36481S) were ki
ndly provided by Hangzhou Haoke Biotechnolog
y Co., Ltd.