

CD23 Recombinant antibody

Cat: B36484S

Company: HaoKebio

Uniprot ID: P20693-1

Applications: IHC:1:1000-1:4000

Organism: Rabbit

IHC-Polymer:1:4000-1:16000

Species reactivity: Mouse

IHC-TSA:1:5000-1:20000

Molecular Weight Calculation: 38 kDa

IF:1:50-1:200

Observed Molecular Weight: 46 kDa

WB:1:2000-1:10000

Background:

CD23/Fc ϵ RII) is a low-affinity receptor for immunoglobulin E (IgE) and CR2/CD21, involved in B cell differentiation and IgE regulation. Two forms of Fc ϵ RII (Fc ϵ RIIa and Fc ϵ RIIb) were found to exist, which differ in structure only in the N-terminal cytoplasmic region, and Fc ϵ RIIa and Fc ϵ RIIb play roles in effector cells of B-cell and IgE-mediated immunity, respectively. On B cells, initiates IgE-dependent antigen uptake and presentation to T cells. On macrophages, after IgE binding and antigen cross-linking, intracellular killing of parasites is induced by activation of the L-arginine-nitric oxide pathway.

Synonyms:

241385C9, Fc-epsilon-RII, Fcer2, Fcer2a, Low affinity immunoglobulin epsilon Fc receptor

Immunogen:

Recombinant protein

Isotype:

IgG

Subcellular location:

Membrane, Cytoplasm

Purity:

Affinity purification

Form:

Liquid

Storage Buffer:

PBS with 0.02% sodium azide, 100 μ g/ml BSA and 50% glycerol.

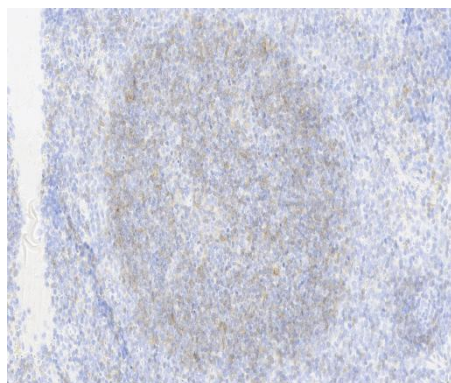
Storage:

Store at -20 °C for one year.

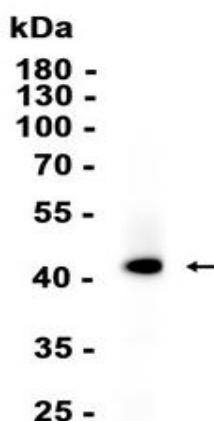
Experimental procedure:

Antigen retrieval: Citrate buffer (pH 9.0) , Medium high heat for 8 minutes, stop for 7 minutes, medium high heat for 8 minutes. Incubate antibody, 4°C overnight. Secondary antibody: Poly-HRP Goat Anti-Rabbit & Mouse Universal Secondary Antibody, RT, 1h.

Images:



Sample: Mouse spleen, 4% PFA 12-24h



Dilution of 1:5000 incubated at room temperature for 1.5 hours.

Source of Reagents:

发表[中文论文]请标注:CD23(B36484S)由杭州浩克生物技术有限公司提供;

发表[英文论文]请标注:CD23(B36484S) were ki
ndly provided by Hangzhou Haoke Biotechnolog
y Co., Ltd.