

CD302 Recombinant antibody

Cat:B36488S

Company: HaoKebio

Uniprot ID:Q9DCG2-2

Applications: IHC:1:50-1:500

Organism:Rabbit

IHC-Polymer:1:200-1:2000

Species reactivity:Mouse Rat

IHC-TSA:1:250-1:2500

Molecular Weight Calculation: 24 kDa

WB:1:500-1:2000

Observed Molecular Weight: 32 kDa

Background:

CD302 is a C-type lectin receptor involved in cell adhesion and migration, as well as endocytosis and phagocytosis. In mice and humans, CD302 is primarily expressed in the liver, lungs, lymph nodes (LNs), spleen, and bone marrow. In CD302 gene knockout (CD302KO) mice, the migration frequency and number of myeloid dendritic cells (mDC) in CD302KO lymph nodes were reduced compared to the wild type, confirming the functional role of CD302 in mDC migration.

Synonyms:

CD302 antigen, Clec13a, C-type lectin domain family 13 member A, Type I transmembrane C-type lectin receptor DCL-1

Immunogen:

Recombinant protein

Isotype:

IgG

Subcellular location:

Membrane,Cytoplasm

Purity:

Affinity purification

Form:

Liquid

Storage Buffer:

PBS with 0.02%sodium azide,100 µg/ml BSA and 50% glycerol.

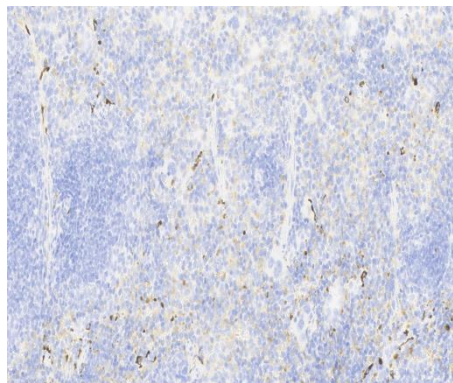
Storage:

Store at -20 °C for one year.

Experimental procedure:

Antigen retrieval: Citrate buffer (pH 9.0) , Medium high heat for 8 minutes, stop for 7 minutes, medium high heat for 8 minutes. Incubate antibody, 4°C overnight. Secondary antibody: Poly-HRP Goat Anti-Rabbit & Mouse Universal Secondary Antibody, RT, 1h.

Images:



Sample: Mouse spleen, 4% PFA 12-24h

Source of Reagents:

发表[中文论文]请标注:CD302(B36488S)由杭州浩克生物技术有限公司提供;

发表[英文论文]请标注:CD302(B36488S) were kindly provided by Hangzhou Haoke Biotechnology Co., Ltd.