

## GCLM Recombinant antibody

**Cat:**B36305S

**Company:** HaoKebio

**Uniprot ID:**P48507

**Applications:** IHC:1:500-1:2000

**Organism:**Rabbit

IHC-Polymer:1:2000-1:8000

**Species reactivity:**Human Mouse Rat

IHC-TSA:1:2500-1:10000

**Molecular Weight Calculation:** 31 kDa

IF:1:50-1:100

**Observed Molecular Weight:** 31 kDa

WB:1:5000-1:50000

### Background:

GCLM(Glutamate--cysteine ligase regulatory subunit) is also named as GLCLR and belongs to the aldol/keto reductase family. It catalyzes the first step of GSH synthesis and is involved in gamma-glutamyl cycle. GCLM is implicated in some forms of hemolytic anemia.

### Synonyms:

Glutamate--cysteine ligase regulatory subunit, Glutamate--cysteine ligase modifier subunit, GLCLR, Gamma-glutamylcysteine synthetase regulatory subunit, Gamma-ECS regulatory subunit

### Immunogen:

Recombinant protein

### Isotype:

IgG

### Subcellular location:

Cytoplasm

### Purity:

Affinity purification

### Form:

Liquid

### Storage Buffer:

PBS with 0.02% sodium azide, 100 µg/ml BSA and 50% glycerol.

### Storage:

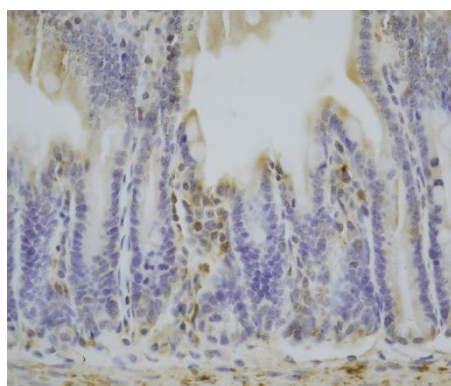
Store at -20 °C for one year.

### Experimental procedure:

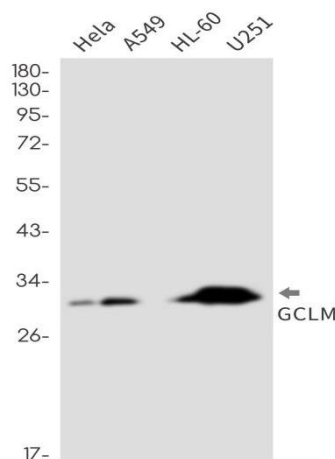
Antigen retrieval: Citrate buffer (pH 9.0), Medium high heat for 8 minutes, stop for 7 minutes, medium high heat for 8 minutes. Incubate antibody,

4°C overnight. Secondary antibody: Poly-HRP Goat Anti-Rabbit & Mouse Universal Secondary Antibody, RT, 1h.

### Images:



Sample: Mouse intestine, 4% PFA 12-24h



Dilution of 1:10000 incubated at room temperature for 1.5 hours.

### Source of Reagents:

发表[中文论文]请标注:GCLM(B36305S)由杭州浩克生物技术有限公司提供;

发表[英文论文]请标注:GCLM(B36305S) were kindly provided by Hangzhou Haoke Biotechnology Co., Ltd.